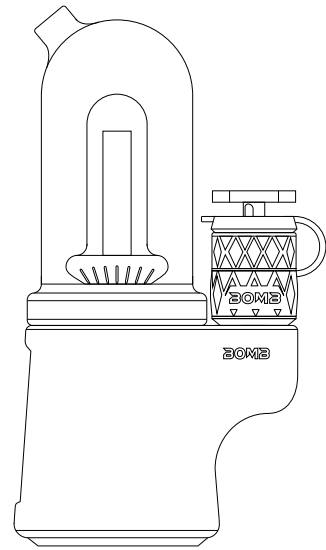


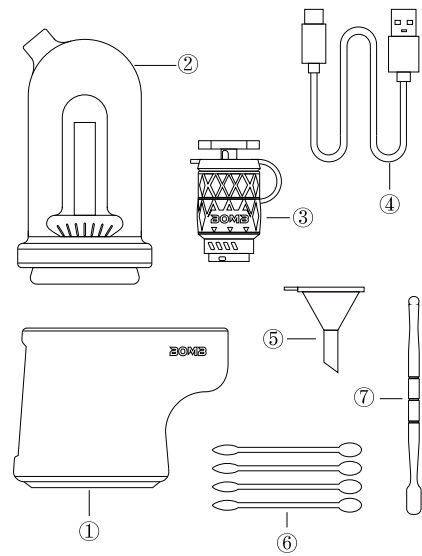
Sykloud

BOMB ERIG



www.bombofficial.com

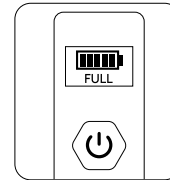
WHAT'S INSIDE?



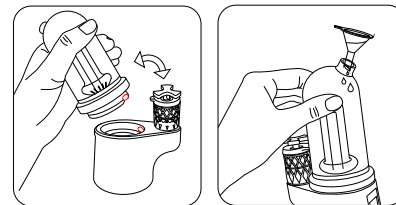
- ① BOMB Base
- ② Glass Chamber
- ③ Sykloud Atomizer
- ④ USB-C Cable
- ⑤ Filling Tool
- ⑥ Cotton Swabs
- ⑦ Loading Tool

QUICK START

1. **Charging** - Ensure your BOMB is fully charged for optimal performance before first use. Normally takes 2.5 - 3 hours to be full till the battery grid indicator does not flash.



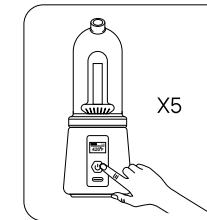
2. **Adding Water** - Fill the glass chamber with water just above the air holes, but not beyond halfway of the central cone. Test and adjust the water level by drawing air through the chamber (NOTE: Please ensure the glass chamber bottom hole aligns with the slot on the inner wall if the glass chamber has ever been detached.)



3. Starting up

Quickly click the button 5 times to turn on/off the device. (NOTE: The device will enter preheat mode automatically and warm up to 300 °F after each turn on).

Load the wax into the atomizer.



4. Temperature Settings

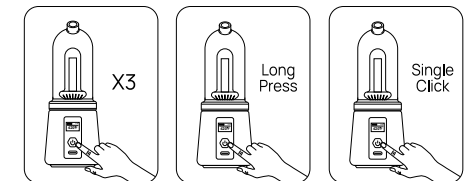
The preset temperature range is 200-700°F.

3 times quick click to enter precise temperature setting mode.

Long-Press: Press and hold to persistent increasing the temperature.

Single-Click: Single-click the button to adjust your temperature in 1-degree increments.

Wait for 3 seconds, temperature setting is done, exit setting mode.



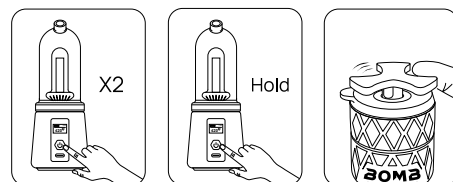
4 times quick click to change the temperature °F to °C

5. Heating Mode Activation

Manual Heat: Press and hold on to initiate heat-up.

Automatic Heat: Double-click to begin the automatic heating process.

The light will turn solid green once it reaches the preset temperature, and ready to inhale. Fidget-Spinner style carb cap allows effortless 360° rotation, delivering a continuous and stable airflow. This design enhances mixing, ensures even heating, and provides larger clouds with richer flavor.



One click to stop the heat at any time.

WARNING

- The device will flash red light if...
 - The device is overheating
 - Short circuit
 - Low battery
- The atomizer is not properly connected or atomized not attached
- If you experience a bug, turn the device on and off. Should the issue persist, contact support

- Do not overfill glass chamber

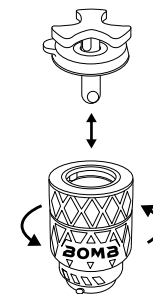
- Do not let water seep into the device and the atomizer

- Keep away from extreme hot and cold temperature

- Keep away from moisture and high humidity

CLEANING : ATOMIZER

1. Unscrew the atomizer from the base.
2. Light Cleaning: Use a cotton swab to gently remove any residue with 90%+ isopropyl alcohol.
3. Deep Cleaning: Submerge the chamber in 90%+ Iso for 20 minutes. Never use water (iso only).



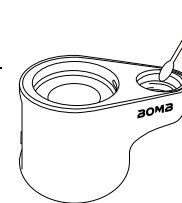
CLEANING : BASE

Preparation: Remove glass and atomizer. Gently clean the gold contact points using cotton swabs soaked in iso.

Clean the airpath between the chamber and the glass.

Do not allow water into the base at any time.

Do not attach if the base or atomizer are still wet or hot. Iso is flammable. Let it dry!



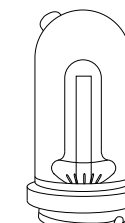
CLEANING : GLASS

Preparation: Carefully remove glass from base

1. Once removed, submerge in iso.

2. After soaking, remove from iso alcohol and rinse clean with water.

(Iso tastes bad, make sure it's completely removed) Allow glass to thoroughly dry before re-attaching to base. **Do not let water seep into bottom chamber of glass.**



WARRANTY

1 year Limited Warranty Program includes the BOMB ERIG device.

30-day Limited Warranty Program includes the BOMB ERIG atomizer.

PRODUCT SUPPORT

For customer support or product related inquiries please contact us

• www.bombofficial.com
• service@bombofficial.com
• 1-626-295-7415
• @bombofficialstore



Share Your Experience!

Use #BOMBERIG and #Sykloud to showcase your setup or reviews. Each month, one lucky participant will win the latest device and accessories!

